

SUTUS

Designed for Small Business

PHONE • DATA • NETWORK

Sutus Business Central, a complete small office IP communications solution.

Solutions for Small Business

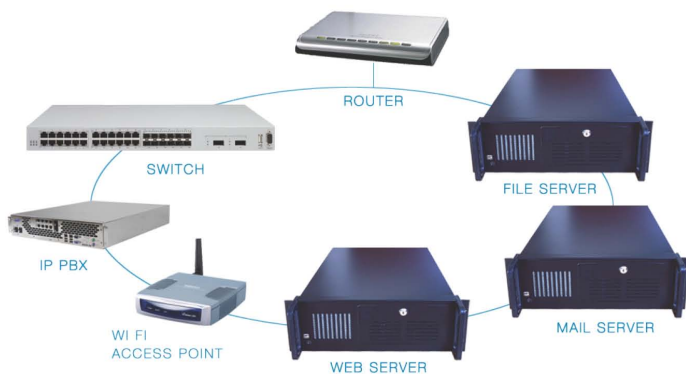


"We chose Business Central because it's easy to manage and because of the remote phone capability - now I can operate my business all the way from Australia and stay fully connected. The system has been working like a dream."

- Jeff Strachan at Footprints Recruiting

- A fully integrated solution delivering voice, data and networking.
- Provides "big business" tools at an affordable price.
- Ease of use, installation, management and maintenance resulting in significantly reduced on-going IT costs.
- Inexpensive when compared to building a piece-meal solution consisting of a phone system, multiple servers, LAN hardware, etc.
- Provides flexibility to use with telephone lines and/or SIP trunks from an ITSP.
- Single vendor/partner relationship making IT decisions simple.
- Single reliable platform.

What would you rather manage?



Business Central 200



Phone Services

- Business class IP PBX
- Use existing phone lines or VoIP
- Voicemail to email
- Auto attendant
- Shared call groups
- Direct lines
- Call forward external
- Soft phone/remote phone

Data Services

- File server
- Email server
- RAID 1 support
- Support for Windows, Macintosh and Linux
- Automated backup

Network Infrastructure

- WiFi wireless access point
- 8 Port PoE 10/100 router
- Firewall
- VPN remote access
- External music on hold

Support Services

- Online customer support
- 12 month warranty
- Automatic software upgrades
- 30 day guarantee

POLYCOM
TOGETHER, GREAT THINGS HAPPEN.
Polycom VIP Partner



Call 866.328.2356 or go to 866dataflo.com

Router

- QoS - WAN traffic fairness
- Dynamic and static WAN IP addresses
- VPN passthrough

Remote Access

- Virtual private network (PPTP)
- Secure web sessions (HTTPS)
- Remote phones and soft-phone support

Local Area Network

- Domain controller "Single Sign On"
- DHCP server
- 10/100 Ethernet

Power over Ethernet (802.11af)

- Support for dynamic and static DNS servers
- Support for LAN layer 2 QoS, 802.1 p - priority
- Support for layer 3 TOS tagging

Wireless LAN Access

- 802.11 b/g
- WPA PSK encryption

File Services

- Support for Windows Explorer, Macintosh Finder, Linux
- CIFS/SMB protocols
- Personal and group file storage
- Local backup management
- Secure web administration

Physical Characteristics

- D, W, H 9" x 11" x 4"
- Form factor: desktop

Hardware Specifications

- 1 x 10/100 WAN Ethernet port
- 8 x 10/100 PoE Ethernet ports
- 1 x 10/100/1000 GigE Ethernet port
- 2 x USB 2.0 port
- 2 x 250Gb hard drives
- 802.11 b/g wireless access point
- Audio in/out



Partnered with Polycom:

Engineered to deliver a superb communications experience that offers:

- Outstanding sound quality
- Advanced functionality
- Ease of use
- Simplified configuration and upgrades
- Long-term flexibility

Security

- NAT
- Stateful packet inspection firewall
- Secure IMAP client support
- Secure SMTP email support
- Single services sign on
- Robust reboot and recovery agent

Telephony

- Native VoIP support
- 3-way conferencing
- DTMF over RTP support (RFC 2833)
- T.38 fax support (Gateway 310)
- Automatic company directory
- Call forward external
- Call detail records
- Direct lines

Subscribed Services Support

- Dynamic DNS
- Automatic security updates
- Subscribed feature upgrades
- Service provider provisioning and management support

